

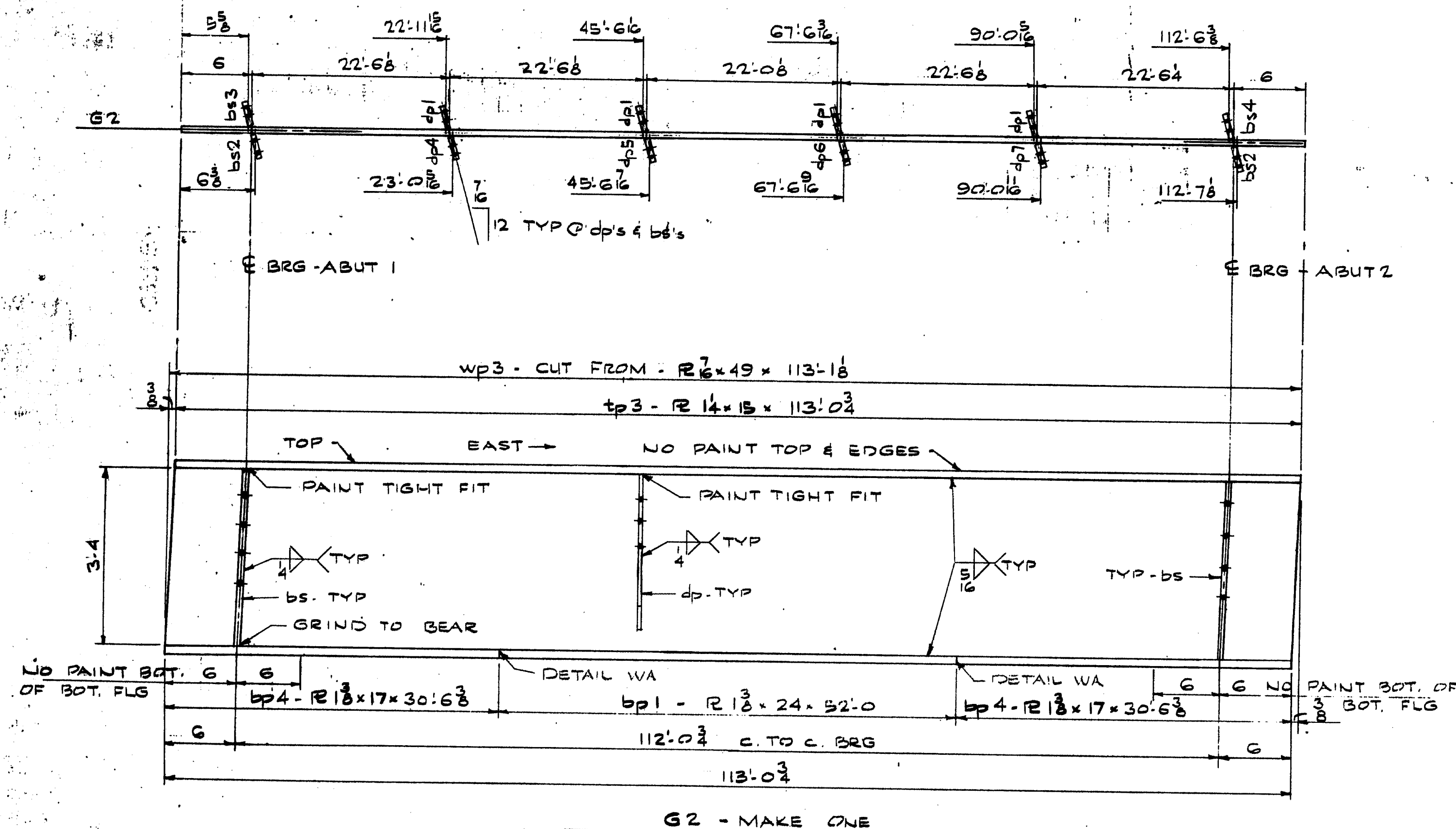
ALL DIMENSIONS ARE HORIZONTAL

NOTE:
FORM BRACKET HOLES ARE TO BE PLUGGED WITH
1/2" x 12" CARRIAGE BOLTS, HEADS TO BE ON OUTSIDE.
HOLES TO BE COMPLETELY COVERED. TACK WELD NUTS
TO GUSSET WEB.

APPROVED AS NOTED: 8-7-72
ITEM NO: 504.7002
PROJ. NO: I295 3(60)

FRAMING PLAN			
PRINT DIST.	Bancroft & Martin Inc.		
2p 7-26-72 FA	South Portland, Maine 04106		
15p 8-27-72 BREWER	JOB: I 295 OVER PREBLE STREET		
8p 8-29-72 DAVIS	PORTLAND MAINE		
2p 10-12-72 CUST	CUSTOMER: BLUE ROCK INDUSTRIES		
	DESIGNER: MSLC BRIDGE DIV		
REV.	ORDER NO.	JOB NO.	DRAWING NO.
CHECKED			
DRAWN			

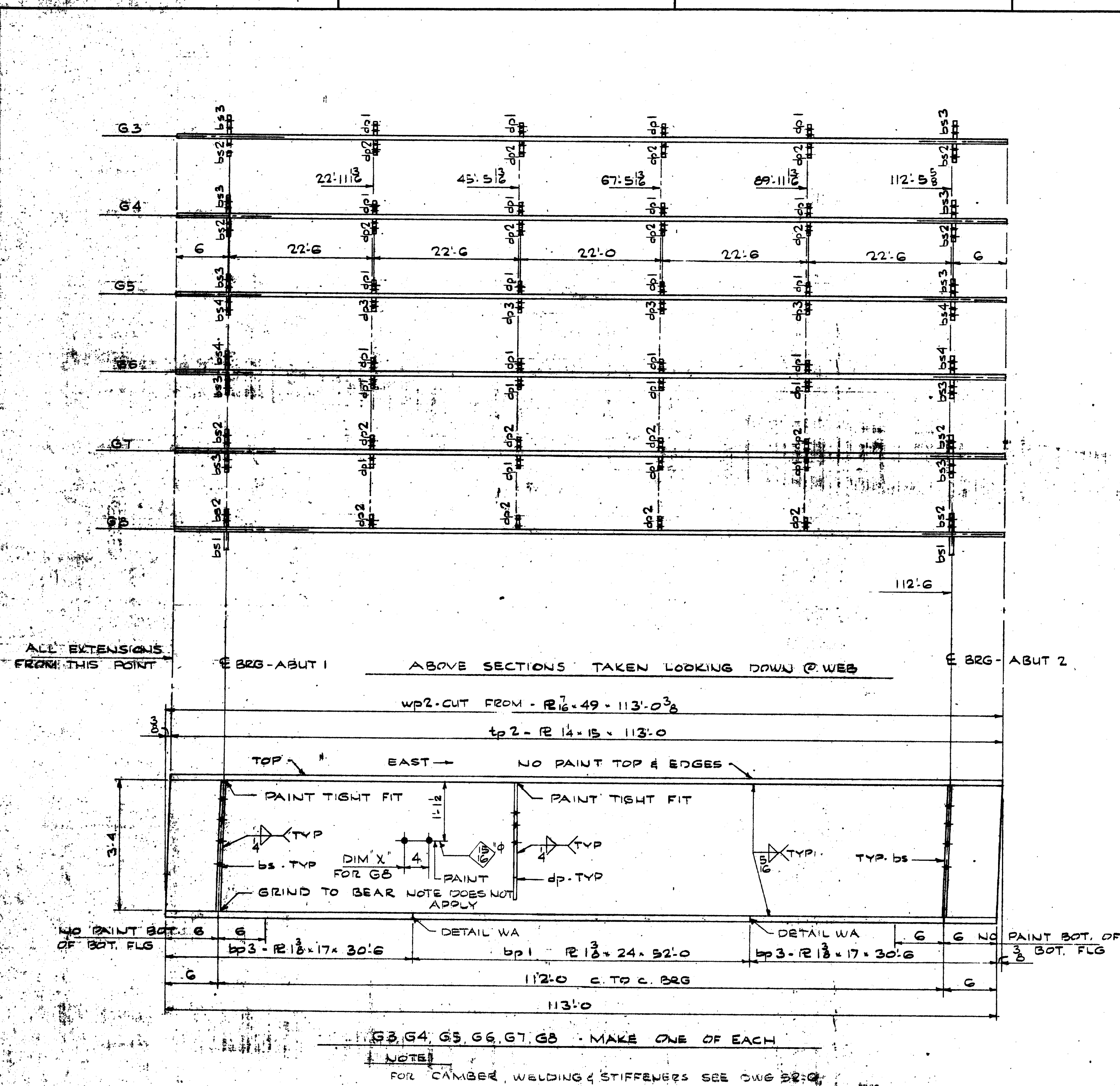
140-40



NOTE:
FOR WELDING, CAMBER & STIFFENERS SEE DWG BY C

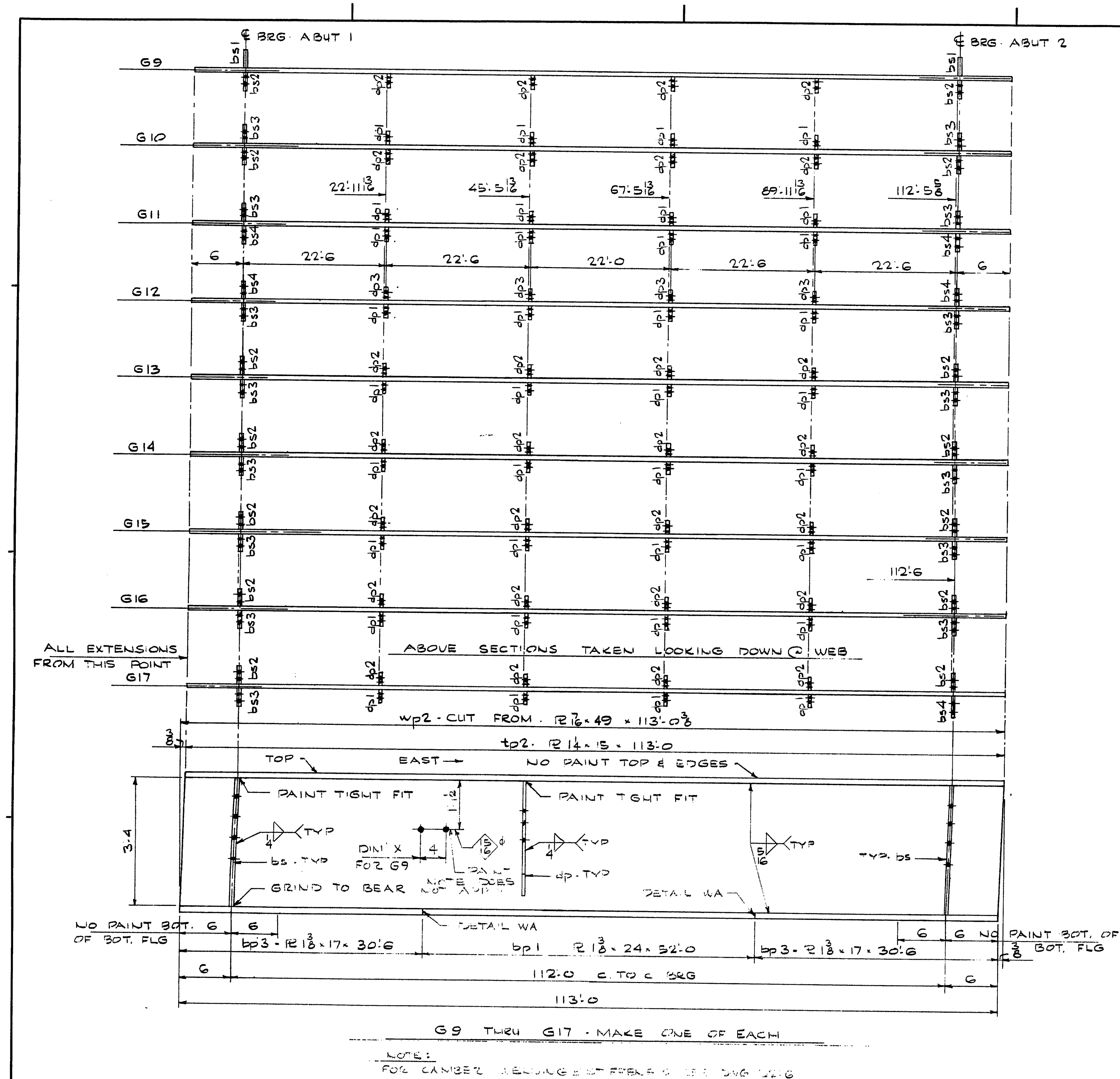
SHIP		BILL OF MATERIAL				JOB NO. 872-227	DWG. NO. 52-2
MARK	NO.	MARK	SHAPE	LENGTH	WT.	ITEM NO.	REMARKS
G2	1		GIRDER	113	1 1/8		
CUT FROM							
	1	wp3	R 7/8 x 49	113	1 1/8	2	
	1	tp3	R 1/4 x 15	113	0 3/4	4	
	1	bp1	R 1 3/8 x 24	52	0	7	
	2	bp4	R 1 3/8 x 17	30	6 3/8	6	
	2	bs2	R 3/4 x 6	3	4	9	
	1	bs3	do	3	4	9	
	1	bs4	do	3	4	9	A36
	4	dp1	R 3/8 x 6	3	1	8	
	1	dp4	do	3	1	8	
	1	dp5	do	3	1	8	
	1	dp6	do	3	1	8	
	1	dp7	do	3	1	8	
ITEM NO. 504.7002							
REQ. NO. I 193 3(60)							
STEEL: ASTM A572 GR 50 & A36 AS NOTED							
WELDING ELECTRODE E7018-EM 12K, E7018, E7028 SEE WELDING PROCEDURES							
SHOP CONN: WELDED							
FIELD CONN: BOLTED							
HOLES: 1 1/2" φ							
PAINT: RED LEAD PER MAINE SPECS & AS NOTED							
SPECIAL CLEANING: BLAST CLEAN							
APPROVED: AS NOTED: 8-7-72							
GIRDER 2 - SOUTHBOUND							
PRINT DIST.							
20	7-26-72	FA	Bancroft & Martin Inc. South Portland, Maine 04106				
13	8-21-72	Brewer					
8	8-29-72	State					
7	10-12-72	Cust					
			JOB: I 293 OVER PREBLE STREET PORTLAND MAINE				
			CUSTOMER: BLUE ROCK INDUSTRIES				
			DESIGNER: M.S.H.C. BRIDGE DIV.				
REV.			ORDER NO.	JOB NO.	DRAWING NO.		
CHECKED							
DRAWN	7-13-72	DWL		872-227	52-2		

140-44



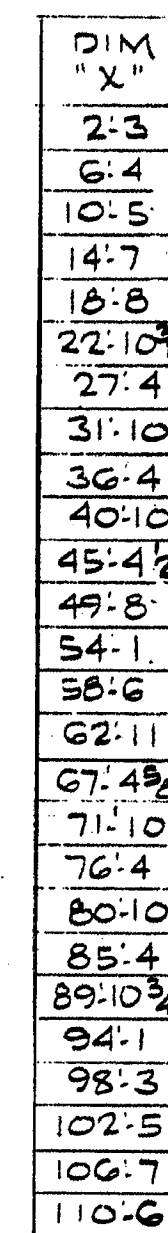
G8
ONLY
DIM
"X"
2'-3
6'-4
10'-5
14'-7
18'-8
22'-10
27'-4
31'-10
36'-4
40'-10
45'-4
49'-8
54'-1
58'-6
62'-11
67'-4
71'-10
76'-4
80'-10
85'-4
89'-10
93'-11
98'-1 1/2
102'-3 1/4
106'-5
110'-5

SHIP		BILL OF MATERIAL			JOB NO. 872-227		DWG. NO. 52-3	
MARK	NO.	MARK	SHAPE	LENGTH	WT.	ITEM NO.	REMARKS	
G3	1		GIRDER	113 0 3/8	—			
G4	1		do	113 0 3/8	—			
G5	1		do	113 0 3/8	—			
G6	1		do	113 0 3/8	—			
G7	1		do	113 0 3/8	—			
G8	1		do	113 0 3/8	—			

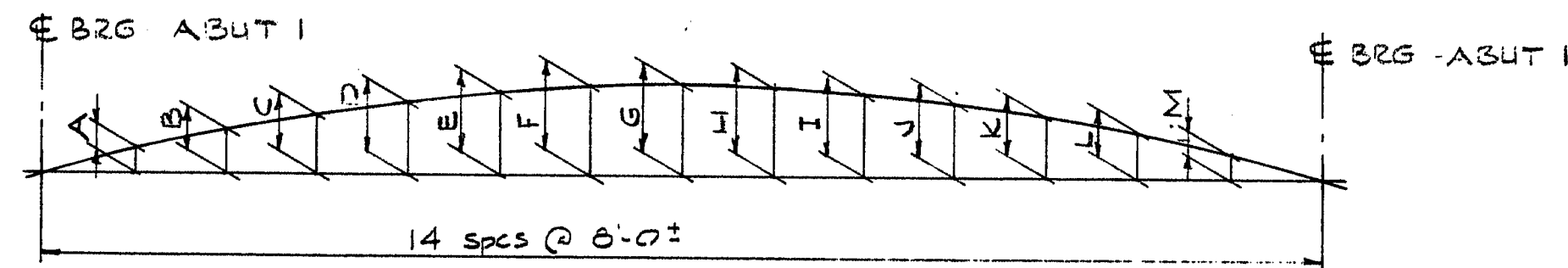


G9
ONLY
DIM
"X"
2-3
6-4
10-5
14-7
18-8
22-10
27-4
31-10
36-4
40-10
45-4
49-8
54-1
58-6
62-11
67-4
71-10
76-4
80-10
85-4
89-10
93-11
98-1
102-3
106-5
110-5

SHIP		BILL OF MATERIAL		JOB NO. 872.227		DWG. NO. 52.4	
MARK	NO.	MARK	SHAPE	LENGTH	WT.	ITEM NO.	REMARKS
G9	1		GIRDER	113	0.8		
G10	1		do	113	0.8		
G11	1		do	113	0.8		
G12	1		do	113	0.8		
G13	1		do	113	0.8		
G14	1		do	113	0.8		
G15	1		do	113	0.8		
G16	1		do	113	0.8		
G17	1		do	113	0.8		
CUT FROM							
9	wp2	R16.49	113	0.8	2		
9	tp2	R14.15	113	0	4		
9	bp1	R13.24	52	0	7		
18	bp3	R13.17	30	6	6		
2	bs1	R3.8	3	4	9		
14	bs2	do	3	4			A36
15	bs3	do	3	4			
5	bs4	R3.8	3	4	9		
36	ap1	R3.8	3	1	8		
28	ap2	do	3	1	8		
4	ap3	do	3	1	8		
ITEM NO. 50 4.1002							
REQ. NO. I 293 3 (60)							
STEEL: ASTM A572 GR 50 & A36 AS NOTED							
WELDING ELECTRODE E70-EM (2K, E7018, E7028 SEE WELDING PROCEDURES)							
SHOP CONN: WELDED							
FIELD CONN: BOLTED							
HOLES: 1 1/8"							
PAINT: RED LEAD PER MAINE SPECS AS NOTED							
SPECIAL CLEANING: BLAST CLEAN							
APPROVED: AS NOTED: 8-7-72							
N.B. GIRDERS G9 THRU G17							
PRINT DIST.							
2 p	7-26-72	FA	Bancroft & Martin Inc. South Portland, Maine 04106				
15 p	8-29-72	Revised					
8 p	8-29-72	State					
2 p	10-12-72	Cost					
JOB:			I 295 OVER PREBLE STREET PORTLAND MAINE				
CUSTOMER:			BLUE ROCK INDUSTRIES				
DESIGNER:			M.S.H.C. BRIDGE DIV.				
ORDER NO.			JOB NO.		DRAWING NO.		
REV.			872.227		52.4		
CHECKED			RGM		DWL		
DRAWN			7-13-72		DWL		

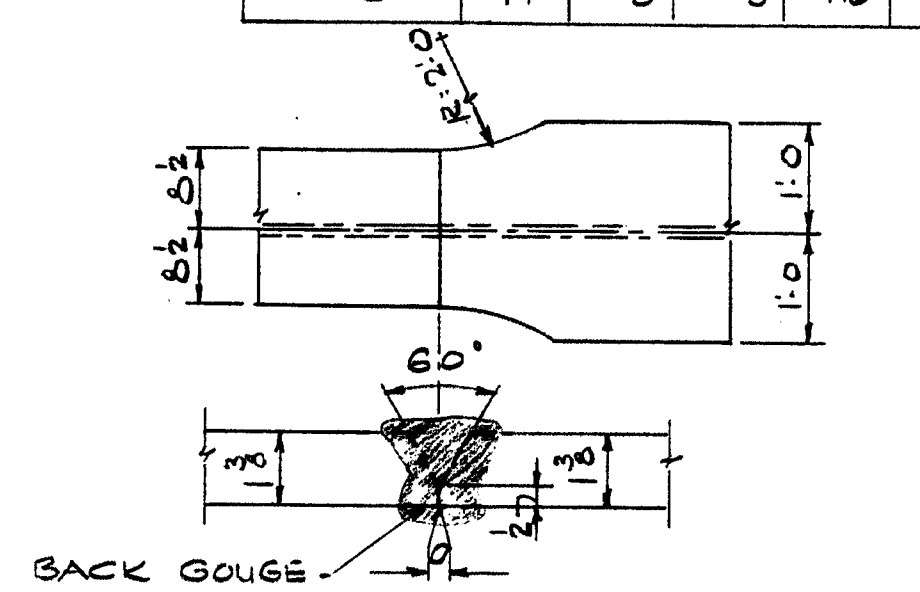
[illegible]

140-47



CAMBER DIAGRAM

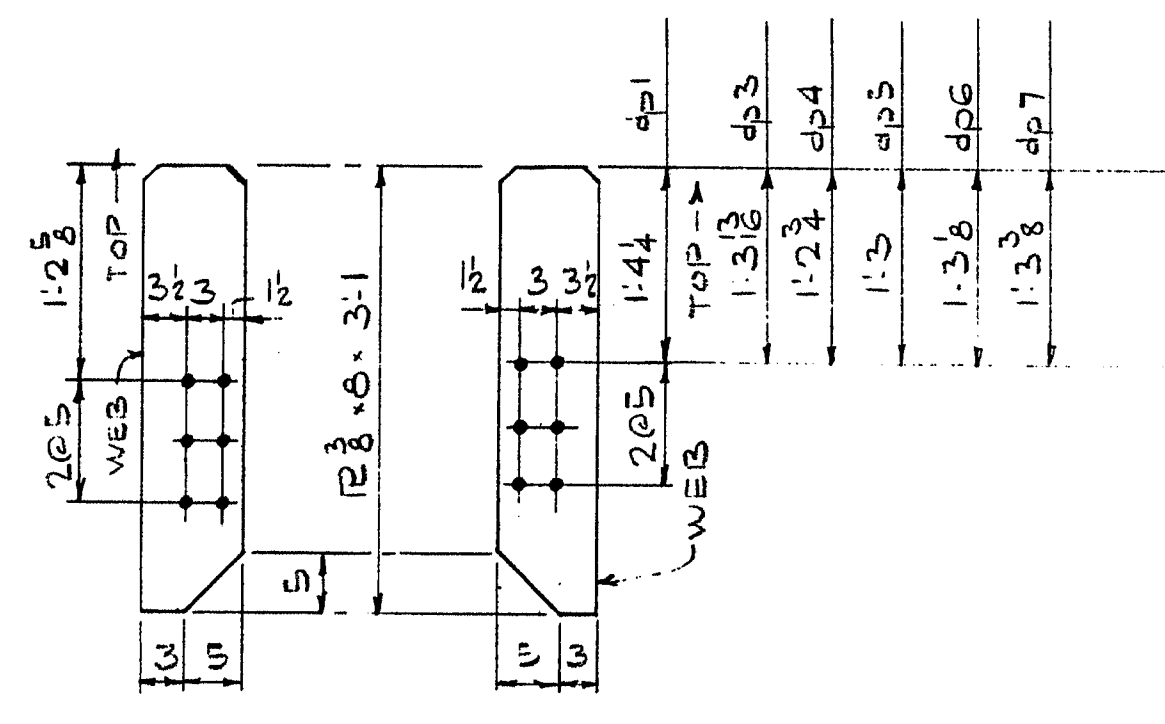
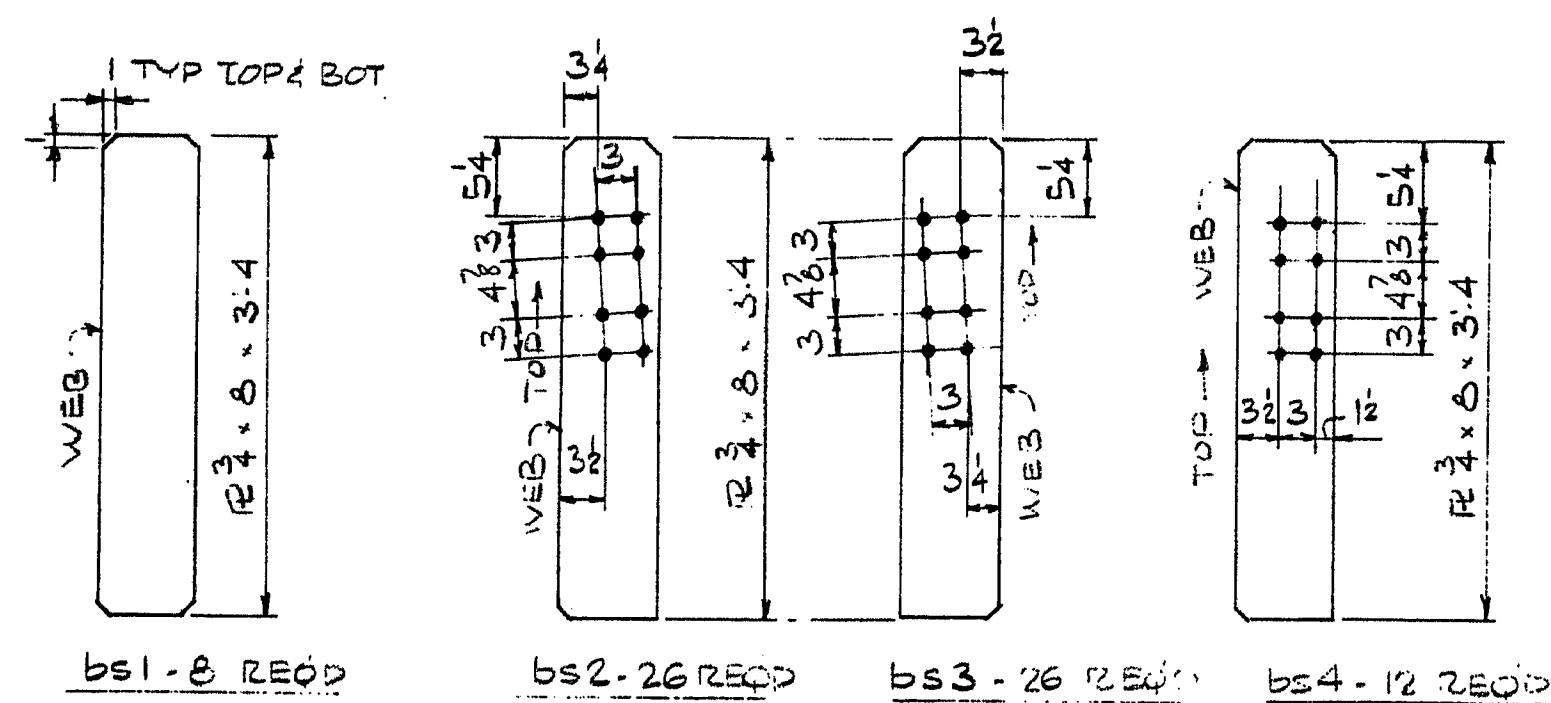
GIRDER	A	B	C	D	E	F	G	H	I	J	K	L	M
G1	1 1/2	2 1/2	3 1/2	4 1/2	5 1/2	6 1/2	7 1/2	8 1/2	9 1/2	10 1/2	11 1/2	12 1/2	13 1/2
G2	1 1/2	2 1/2	3 1/2	4 1/2	5 1/2	6 1/2	7 1/2	8 1/2	9 1/2	10 1/2	11 1/2	12 1/2	13 1/2
G3 & G17	1 1/2	2 1/2	3 1/2	4 1/2	5 1/2	6 1/2	7 1/2	8 1/2	9 1/2	10 1/2	11 1/2	12 1/2	13 1/2
G4 THROUGH	1 1/2	2 1/2	3 1/2	4 1/2	5 1/2	6 1/2	7 1/2	8 1/2	9 1/2	10 1/2	11 1/2	12 1/2	13 1/2
G18	1 1/2	2 1/2	3 1/2	4 1/2	5 1/2	6 1/2	7 1/2	8 1/2	9 1/2	10 1/2	11 1/2	12 1/2	13 1/2



B-L2C-S

DETAIL WA

SEE WELDING PROCEDURE #3

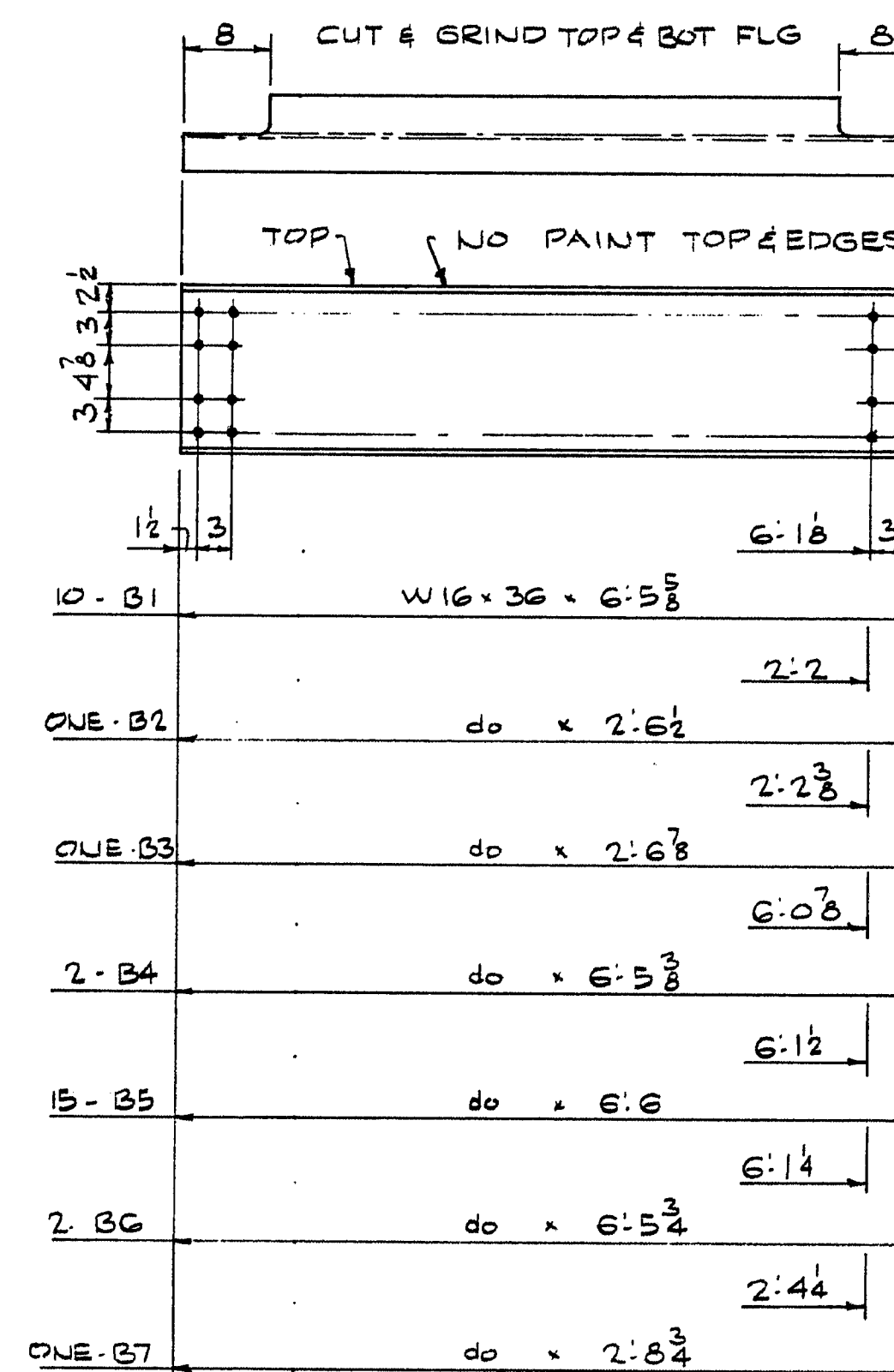


HOLES ARE FOR HIGH TENSILE BOLTS
They are to be free from burrs
and shall not be painted on any
surface within 5" of such open
holes.

ITEM NO: 504.7002
PROJ. NO: I 295.3(60)
APPROVED AS NOTED: 8.7.72

CAMBER - WELDING - STIFFENERS				
PRINT DIST.		<i>Bancroft & Martin Inc.</i> <i>South Portland, Maine 04106</i> JOB: I 295 OVER PREBLE STREET PORTLAND , MAINE CUSTOMER: BLUE ROCK INDUSTRIES DESIGNER: MSHC BRIDGE DIV		
2p	7.26.72			FA
156014	8.29.72			Brewer
3p	8.29.72			State
2p	10.17.72			Cust
REV.		ORDER NO.	JOB NO.	
CHECKED				
DRAWN	7.17.72	126M DWL	52-G	

140-48

[illegible]

140-49

